

K-Free^(TM) help Index

[Introduction.](#)

[Installation.](#)

[Main window elements.](#)

[K-Free commands.](#)

[K-Free options.](#)

[Setting the main window font.](#)

[Changing the colors.](#)

[Getting information on all hard drives.](#)

[Command line options.](#)

[KFREE.INI settings.](#)

[Registering K-Free.](#)

[How to contact Dragons Eye Software.](#)

Introduction

Thank you for trying K-Free. If you have registered the program and are reading the printed documentation or browsing the help file, then thank you for paying for K-Free!

What is K-Free?

K-Free is, at its most basic level, a monitor for Microsoft Windows 3.0 that allows you to keep track of free memory in your computer. If you enable some of K-Free's other functions, the program becomes a disk space monitor, a task monitor and a computer configuration display program.

Do I need K-Free?

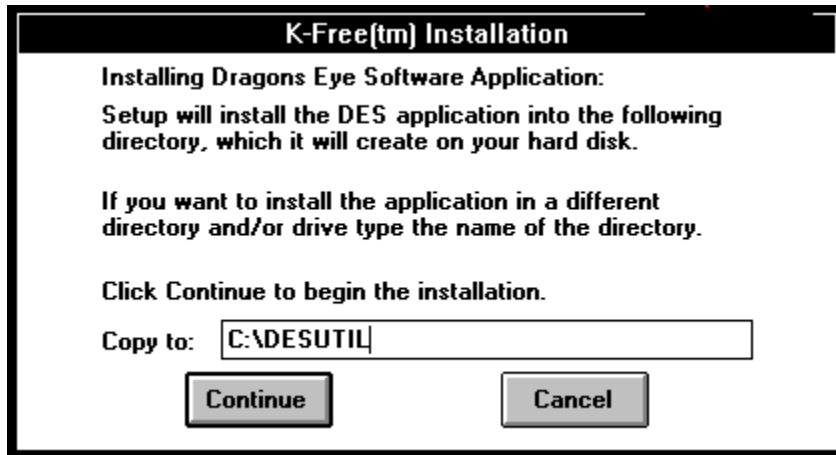
If you need to keep track of the amount of free memory and/or free disk space on your computer while you are busy using Windows, then you need K-Free. K-Free continuously monitors both the free memory and free disk space in your system, which allows you to prevent problems due to a lack of space in either area.

Also, if you need a quick way to find out how much free space you have on all your hard drives, then you need K-Free. With the touch of two buttons K-Free will show you all your hard drives, their type, the number of bytes free on each drive and disk-specific information for each drive. This feature allows you to find out which drive has the most space before you try to copy files to it.

Who wrote K-Free?

K-Free was written by Michael Harrison of Dragons Eye Software. K-Free was written using the Microsoft Windows SDK version 3.0 and the Microsoft C 6.0 compiler. K-Free began as a simple memory and disk monitor in May of 1990 and has evolved to be the most flexible system space utility available for Windows 3.0 today. No other utility in its class can match K-Free.

Installing K-Free



Installing K-Free is as simple and easy as starting Windows and running a program. In fact, that is exactly what you need to do in order to install K-Free.

Please start Windows now. On the disk with K-Free is a Windows program called INSTALL.EXE that is used to create a directory for K-Free and install it in a group within the Program Manager. To install K-Free please follow these instructions:

1. Run INSTALL.EXE by clicking on the file using either the File Manager or MS-DOS Executive.
2. Type in the name of the directory where you would like K-Free to be installed and then click on Ok. If the directory does not exist, Install will create it for you. Install starts with a default directory of **C:\DESUTIL**.

Sit back and relax. INSTALL will copy the K-Free program files and documentation to the specified directory and install K-Free in a Program Manager group named **DES Util**.

K-Free main window

```
Press Alt-H for help
Protected Mode
80386 CPU
Enhanced Mode
No Math Chip
Windows Memory: 14,919Kb
Largest Block: 665Kb
Number of Tasks: 8
Drive: C: 11Mb
Drive: D: 24Mb
Drive: E: 2,042Kb
```

The K-Free main window is composed of several elements, all of which may or may not be displayed, depending on the options chosen from the Options dialog. All of the possible elements are outlined below.

1. The first element is the Windows Info section, which is composed of several items. Windows Info will display the mode in which Windows is currently running (Protected or Real). If Windows is running in Protected mode, KFree will show that Windows is in either Standard or 386 Enhanced mode. KFree will also display your machine's CPU type (the one shown here is an 80286) and whether you have a math coprocessor installed in your machine.
2. The next element is Memory. In this section KFree displays the amount of memory free under Windows. If you have Expanded Memory (EMS) installed in your system or set up through the use of an EMS driver, KFree will display the amount of EMS memory free and the EMS driver version.
3. The third element is the Largest Block of free memory available from Windows. This allows you to see how much contiguous memory is available from Windows to the programs currently running. Often this number is a more accurate indicator of free memory, as the Windows Memory number includes **all** free memory, some of which may not be readily available to applications.
4. The fourth element is the number of tasks currently running on your system. This number indicates how many applications are executing and may be used to detect programs that are running in the background.
5. The fifth element is Drive information for all the drives selected in the Options dialog. Each selected drive will be on its own line with the amount of free space shown on the right side as either Kilobytes or Megabytes (K or M). KFree will display information for up to 26 drives.
6. The final element is the Help line that is displayed at the top of the window. This line is intended to remind beginning users that on-line help is available and may be turned off from the Options dialog.

See also:

[K-Free commands.](#)

K-Free commands

The commands that are available from the main K-Free window are as follows:

Using the Mouse:

To bring up the Options dialog - double click the left mouse button.

To exit K-Free - double click the right mouse button.

To bring up the K-Free command menu - press CTRL + click the left mouse button.
Then select the option you want to use.

To bring up the hard drive information dialog box - press CTRL + click the right mouse button.

To move the K-Free main window - place the mouse cursor within the K-Free window and press and hold the left mouse button while moving the mouse to move the K-Free window to another part of the screen.

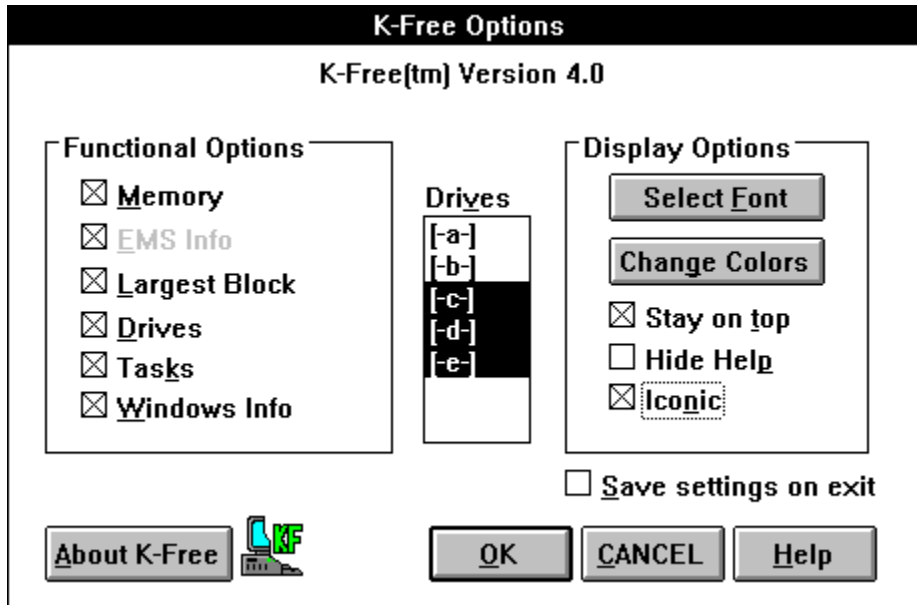
Using the Keyboard:

Pressing the **Alt** key plus

- O** brings up the Options dialog.
- C** brings up the Color dialog.
- F** brings up the Fonts dialog.
- D** brings up the Hard drive dialog.
- H** brings up the Help dialog.
- X** exits K-Free.
- F4** exits K-Free.
- F7** allows you to move the K-Free main window using either the cursor keys or mouse.

Pressing the **F1** key will also bring up help for K-Free.

Options dialog



The Options dialog is used to configure K-Free so that it displays only the information you need. To bring up the Options dialog you may double click on the K-Free main window with the left mouse button, or press **ALT-O**.

The following option topics are available:

[Functional Options.](#)

[Display Options.](#)

[Misc Options.](#)

K-Free functional options

1. Memory option.

Selecting *Memory* instructs K-Free to monitor system memory and display the amount of RAM in your system that is unused by either Windows or any other program currently running on your computer.

The amount of total memory shown does not reflect the difference in the amount of RAM available as opposed to the size of your disk swap area (if you are using Windows in 386 Enhanced mode). In other words, if you have a 4 Megabyte swap file and you have 4 Megabytes of RAM on your system, K-Free may display 8 Megabytes as the amount of memory available.

2. EMS option.

Selecting *EMS Info* causes K-Free to display the amount of Expanded (EMS) memory currently free, and the version of the EMS driver that you are using.

If you do not have any EMS memory set up in your system, this option will be grayed out, and you will be unable to select it, as shown above.

3. Largest memory block.

Selecting *Largest Block* will cause K-Free to display the size of the largest block of free memory that Windows can access.

This value is often a more accurate indicator of available memory than the number that is available through the Program Manager, as it represents the largest contiguous block of memory that may be requested by applications running under Windows.

4. Drive option.

Selecting *Drives* causes K-Free to display the number of bytes free on the selected drive(s) in either kilobytes or megabytes depending on the actual amount free. If you have less than 10 Meg free on the selected drive, KFree will display the number as Kilobytes; otherwise, you will see the amount represented in Megabytes. You select the drive or drives to monitor from the Options menu by choosing *Drives* mode and clicking on one or more drives in the listbox. K-Free will display the space free for up to 26 drives at one time.

If you want to find out the amount of free space on all the hard drives in your system quickly, please see the section entitled **Hard drive dialog** for instructions.

5. Number of Tasks.

Selecting *Tasks* causes K-Free to display the number of applications that are running in Windows. This number can be used to track any applications that may be running on your system that do not usually need your attention. These applications are ones that normally run in the background.

6. Windows Information.

Selecting *Windows Info* will display the mode in which Windows is currently running. (Protected or Real). If Windows is running in Protected mode, KFree will show that Windows is in either Standard or 386 Enhanced mode. K-Free will also display your machine's CPU type and whether you have a math coprocessor installed in your machine.

K-Free display options

1. Main window font.

Clicking on *Select Font* will bring up the font selection dialog, where you may change the font that K-Free uses in the main window. Any raster-based font currently installed in your system may be used with K-Free.

2. Main window color.

Clicking on *Change Colors* will bring up the Colors dialog box, where you may change the text and background colors that are used in the main window.

3. Stay on top.

Selecting the *Stay on Top* option causes K-Free to remain above all the other windows that are currently visible on the windows desktop, regardless of which window or program you are currently using, with the exception of screen blankers such as Idlewild, Intermission or Magic.

4. Hiding the help line.

This option, when selected, will cause K-Free to hide the main window line that reads: "Press Alt-H for help" so that experienced users will only see the information that they need. *Hide Help* is de-selected by default.

5. Main window size.



14,745Kb
492Kb
Tasks: 8
C: 11Mb
D: 24Mb
E: 2,042Kb

Selecting *Iconic* causes the main K-Free display to appear in its smallest form. The main window will only use the amount of space needed to display the information you have selected. For example, the window shown above would appear if you had selected the options as shown in the Options dialog on page 6.

If you have selected *Windows Info*, the Windows information will **not** appear when *Iconic* is selected.

Misc options.

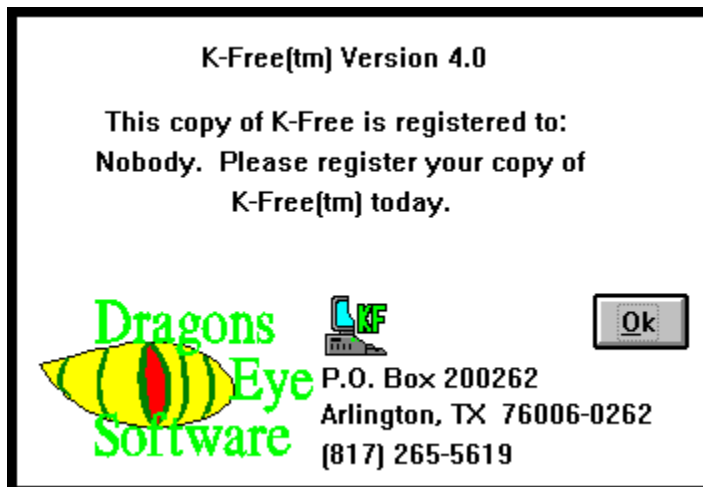
1. Saving your settings.

Selecting *Save settings on exit* causes K-Free to save the current Options dialog settings when K-Free is closed. The current font, colors and window position will also be saved.

Save settings on exit is off by default.

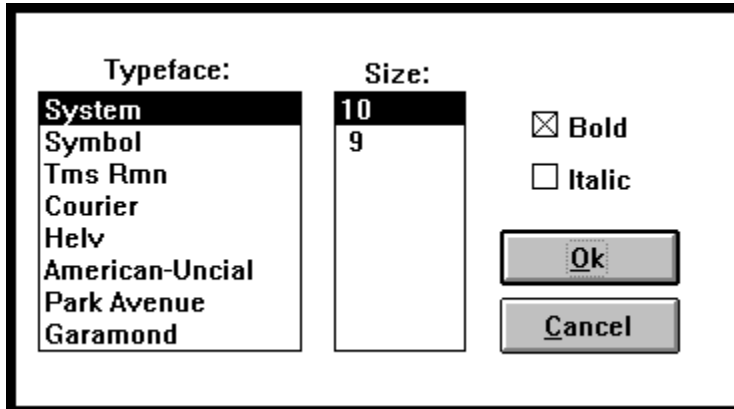
When you exit from K-Free the current settings will be saved to the INI file only if you have selected *Save settings on exit* in the Options dialog box during the current K-Free session.

2. About K-Free.



Clicking on *About K-Free* will cause the About box to appear. The K-Free About box displays the registration number and name of the registered individual if a registered version of K-Free is being executed.

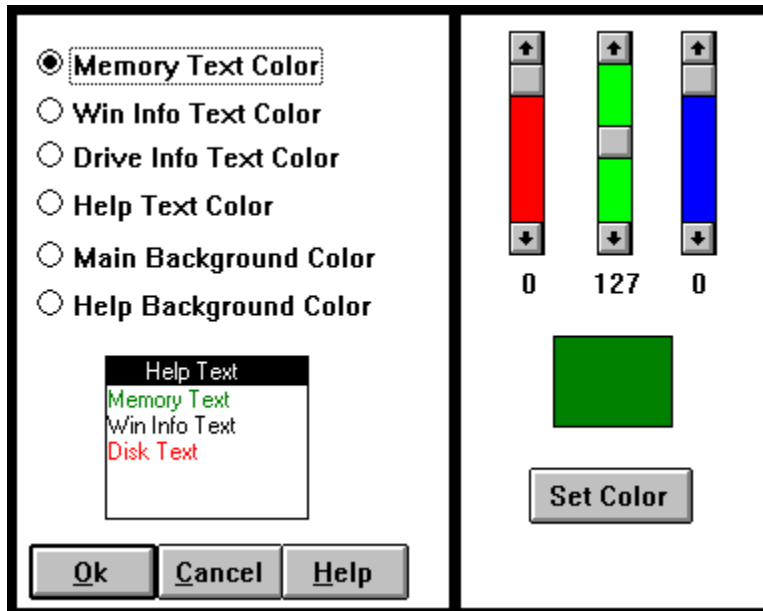
Font dialog



The *Font* dialog is used to select the font that is used in the K-Free main window. To choose the font that you want to use in the K-Free main window, click one of the *typefaces* listed, and then click on one of the available sizes as listed in the *size* listbox. After choosing the type and size, you may click on either *Bold* or *Italic*.

After you click *Ok*, the new font will be used in the main window. If you have *Save settings on exit* selected in the Options dialog, the current font will be saved when K-Free is closed.

Color dialog



The Color dialog is used to change the text and background colors of the main window. You may select an object and click on *Set Color* to change its color. A representation of the main window is continuously visible at the bottom of the dialog box, which reflects your color choices after you click on *Set Color*.

In order to change a particular color, you should select one of the radio buttons in the upper left of the dialog. By using the scroll bars you can create any color that is available under Windows. To change the color of the text or background you should click on *Set Color*.

Please note that many colors in Windows are *dithered* colors. That means that Windows is unable to create a solid color that is a mix of the red, green and blue values you select, and Windows must create a dot pattern that closely approximates the color you select. If you attempt to set text to a dithered color, Windows will cause the text to appear in the closest **solid** color that is available on your system.

When you have finished changing the colors, press *Ok* to accept the changes or *Cancel* to abort.

Hard drive dialog

Hard Drive Information					
Drive	Type	Bytes Free	Free Clusters	Sectors/ Cluster	Bytes/ Sector
C:	Fixed	12,183,552	5,949	4	512
D:	Fixed	25,761,792	12,579	4	512
E:	Fixed	2,091,008	2,042	2	512

The *Hard Drive Information* dialog will display all the hard drives in your system, along with the following information for each of the drives:

1. Type of drive, either *Fixed* or *Network*. If you have a RAM drive or **SUBST**'ed drive in your system, the drive will be listed as *Fixed*.
2. Number of bytes free.
3. Free clusters.
4. Number of sectors per cluster.
5. Number of bytes per sector.

By using this dialog, you can quickly determine which drive has the most space available before doing a lengthy install or copy. You may also determine which drives would benefit from reorganizing.

Command line parameters

The command line syntax for K-Free is as follows:

```
KFREE [drive...]
```

where [drive...] is one or more optional drive letters followed by colons. These drives will be monitored by K-Free upon startup.

For example, choosing *Run* from the Program Manager and typing in the following line:

```
KFREE C: D: E:
```

will cause K-Free to monitor drives: C, D and E and display the bytes free for each drive.

If no parameters are put on the K-Free command line, K-Free will begin by displaying current settings as saved in the KFREE.INI file.

***** NOTE *****

If you try to enter the above example on either the "RUN=" or "LOAD=" lines in the WIN.INI file, Windows will display error messages. These messages occur because Windows expects program names **only** on these lines. If you want KFree to run when you start Windows, you may use "Run" from Dragons Eye Software. Run allows you to execute one or more programs at the same time and give each program its own command line.

KFREE.INI settings

There are several options which may be set within the KFREE.INI file. These options and their usage are outlined below. The text below is formatted much the same as the options appear in the .INI file. To edit the KFREE.INI file you should use the Notepad program supplied with Windows, and look for the file in the directory where Windows is installed.

When you exit from K-Free the current settings will be saved to the INI file only if you have selected *Save settings on exit* in the Options dialog box during the current K-Free session.

The following INI sections are covered:

[Misc.](#)

[Functional Options.](#)

[Display Options.](#)

[Font.](#)

[Misc]

Xloc= is the X location of the upper left corner of the K-Free window. This option is set to 0 by default.

Yloc= is the Y location of the upper left corner of the K-Free window. This option is set to 0 by default.

CommandLine= should be set to the options that you want K-Free to use when K-Free is started with a blank command line. Any option that is valid for the normal K-Free command line may be used here. All commands should be enclosed in quotes. **CommandLine=** by default, is set to "C:" in the distributed INI file.

WindowBorder= should be set to 1 if you want a black line to appear around the main K-Free window. It should be set to 0 to turn the border off.

[Functional Options]

Memory= should be set to *1* if you want K-Free to display available memory upon startup, or *0* if you do not want memory information displayed.

Drive= should be set to *1* to display drive information, or set to *0* to turn the drive option off.

LBlock= should be set to *1* to display the largest block information, or set to *0* to turn Largest Block off.

Winfo= should be set to *1* to display Windows information, or set to *0* to turn Windows information off.

Tasks= should be set to *1* to turn the task # display on, or set to *0* to turn it off.

EMSMemory= should be set to *1* to turn the EMS information display on, or set to *0* to turn the display off.

[Display Options]

OnTop= should be set to *1* for K-Free to appear on top of the other windows on the screen.

ShowHelp= should be set to *1* to enable the display of the help line at the top of the K-Free window, or set to *0* to disable the help line.

Iconic= should be set to *1* to turn Iconic mode on, or set to *0* to turn it off.

[Font]

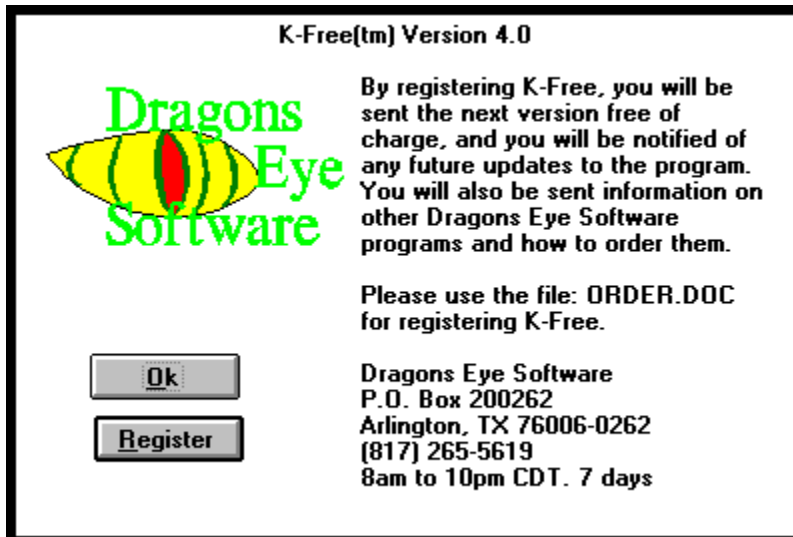
Font= contains the name of the font used in the main window. The default font as shipped with K-Free is the Windows *System* font. You may use any raster font available on your computer.

Size= contains the point size of **Font** to use. You should only specify point sizes that are actually installed in your system. The default as shipped with K-Free is 10 points.

Italic= should be set to *1* to use an italic font in the main window, or *0* to use a normal font. This option is set to *0* by default.

Weight= should be set to *400* for a normal weight in the chosen font, or *700* for bold. This option is set to **700** by default.

Entering your Registration number



When you see the screen shown above, click on *Register*, and the following dialog will appear.

Register K-Free

Registration #

Name

Buttons: **Ok**, **Cancel**

1. Enter your 10-digit registration number in the *Registration #* field (you may use either upper or lower case characters).
2. Enter your name in the *Name* field.

Click on *Ok*, and K-Free will update the KFREE.EXE file. After entering your registration number and clicking *Ok*, the opening screen shown at the top of this page will never again appear.

Contacting Dragons Eye Software

If you have any suggestions or comments please contact us at:

Dragons Eye Software
P.O. Box 200262
Arlington, TX 76006-0262

or send a CompuServe EasyPlex message to CIS [**76057,101**].

For telephone support, upgrade information or ordering, please call: **(817) 265-5619** from 8 am to 10 pm Central time 7 days a week.